

Hosted by Eleanor Harmon



# BUDAPEST TO THE BLACK SEA

September 17-28, 2005

## ITINERARY:

- Day 1: USA—Budapest
- Day 2: Budapest
- Day 3: Kalocsa
- Day 4: Cruising
- Day 5: Belgrade
- Day 6: Iron Gates
- Day 7: Svislov
- Day 8: Cernavoda-Black Sea
- Day 9: Oltenita-Bucharest
- Day 10: Transylvania-Bran Castle
- Day 11: Bucharest-USA



Cruise from Budapest to the Black Sea through Hungary, Serbia, Bulgaria and Romania aboard Uniworld's *River Countess*. Starting in Budapest you will cruise through the endless vistas of the Hungarian plains. The scenery changes to lush farmland



and riverside fortresses as you pass through Serbia. Cruise through the breathtaking Iron Gates, marking the border between Serbia, Romania and Bulgaria. From here, the river widens and cuts a dramatic path past quaint villages and rich pastures all the way to the Black Sea, .



## INCLUDED FEATURES:

- Hosted by Eleanor Harmon
- Roundtrip flight to Europe from Boise
- 11 Days (9 nights) including 2-night deluxe hotel stay in Bucharest and 7-night deluxe cruise in an outside cabin onboard the River Countess
- All meals onboard ship
- Dinner in a local restaurant in Bucharest
- Daylight sailing through the Iron Gates
- 7 guided shore excursions
- Uniworld Cruise Manager throughout your cruise
- All transfers for passengers on Uniworld flights
- All Air, Tax, and Port Fees

## Pricing

Category 5	Moselle	Twin/Double	\$3515.00*
Category 4	Moselle	Twin/Double	\$3615.00*
Category 3	Main	Twin/Double	\$3815.00*
Category 2	Danube	Twin/Double	\$3965.00*
Category 1	Rhine	Twin/Double	\$4115.00*
Category L	Rhine	Suite	\$4865.00*

\*Prices based on per person, double occupancy, Single rates available on request. Prices subject to change and availability.

**Deposit:** \$500.00 per person at time of booking

**Final Payment Due:** 05/25/05

**Cancellation Penalties:** \$100.00 per person at time of booking

120-90 days prior: 10% 89-60 days prior: 35%

59-30 days prior: 50% Less than 30 days prior: 100%

**Harmon Travel Strongly recommends the purchase of Trip Cancellation Insurance**

**Optional cruise extension:  
Combine Amsterdam to Budapest Cruise  
and save over \$1400.00 per person.  
Call for Details**



**For Reservations Call Harmon Travel**  
1-800-627-1315 / 1-208-388-3000  
www.harmontravel.com  
vacations@harmontravel.com

# RIVER COUNTESS

Sail this inaugural season aboard the River Countess, the ship of your dreams, part of the most luxurious fleet in Europe.



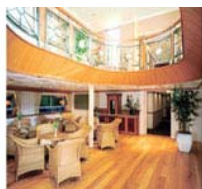
Deluxe Outside Cabin  
Cat. 1 Stateroom pictured



Category L; Suite Stateroom



River Countess Main Dining



Patio Lounge

**Suite:** Extra spacious suite with sitting area and three floor-to-ceiling windows

**Category 1:** Deluxe outside Cabin with two Floor-to-ceiling windows

**Category 2:** Deluxe outside Cabin with one large panoramic window

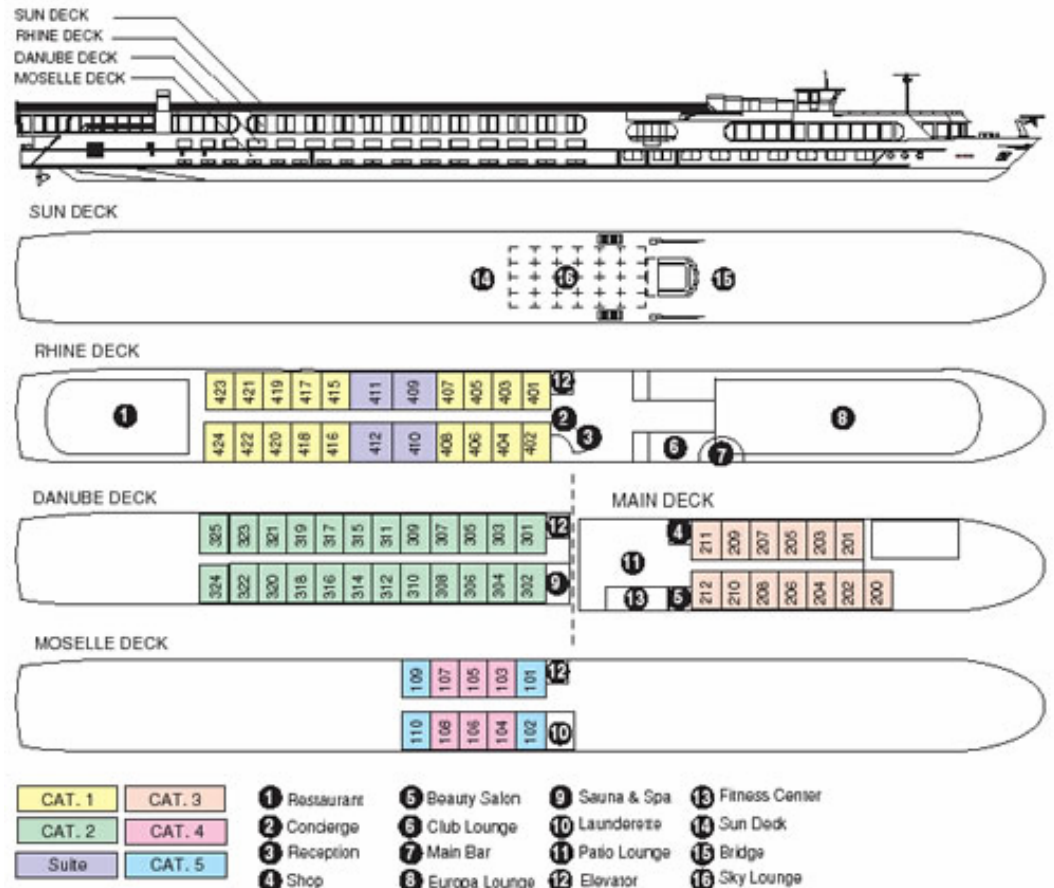
**Category 3:** Deluxe outside Cabin with two large windows

**Category 4:** Deluxe outside Cabin with two smaller windows (windows do not open)

**Category 5:** Deluxe outside Cabin with two smaller windows (windows do not open)

Harmon Travel strongly recommends the purchase of Trip Cancellation/Trip Interruption Insurance  
Please call for more information.

m.s. River Empress, Princess, Countess, Duchess



River Countess staterooms are roomier than those found on ocean-going cruise ships. Outside cabins measure over 154 sq. ft., while suites are extra spacious, at 230 sq. ft. Cabins on the top deck have floor-to-ceiling windows. All staterooms are spacious, non-smoking, with panoramic views.

**Harmon Travel**  
1-800-627-1315/ 1-208-388-3000  
vacations@harmontravel.com  
www.harmontravel.com